



**MOTOR
CONTROL**
SCOTLAND



MCS-D0003 – DrivePanel User Manual

Motor Control Scotland
www.motorcontrolscotland.co.uk
info@motorcontrolscotland.co.uk

DrivePanel Core

DrivePanel Core Series of motor control panels from Motor Control Scotland come in a range of sizes.

Part Number	KW Rating	Voltage Rating
MCSDC0037	0.37	380–480V
MCSDC0075	0.75	380–480V
MCSDC0150	1.5	380–480V
MCSDC0220	2.2	380–480V
MCSDC0400	4	380–480V
MCSDC0550	5.5	380–480V
MCSDC0750	7.5	380–480V
MCSDC1100	11	380–480V
MCSDC1500	15	380–480V
MCSDC1850	18.5	380–480V
MCSDC2200	22	380–480V
MCSDC3000	30	380–480V
MCSDC3700	37	380–480V
MCSDC4500	45	380–480V
MCSDC5500	55	380–480V



DrivePanel +Safe

DrivePanel Core Series of motor control panels from Motor Control Scotland come in a range of sizes.

Part Number	KW Rating	Voltage Rating
MCSDS0037	0.37	380–480V
MCSDS0075	0.75	380–480V
MCSDS0150	1.5	380–480V
MCSDS0220	2.2	380–480V
MCSDS0400	4	380–480V
MCSDS0550	5.5	380–480V
MCSDS0750	7.5	380–480V
MCSDS1100	11	380–480V
MCSDS1500	15	380–480V
MCSDS1850	18.5	380–480V
MCSDS2200	22	380–480V
MCSDS3000	30	380–480V
MCSDS3700	37	380–480V
MCSDS4500	45	380–480V
MCSDS5500	55	380–480V



GET IN TOUCH WITH US
+44 752 535 8633

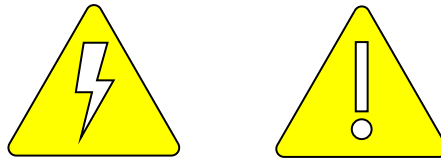
Email:
info@motorcontrolscotland.co.uk

Website:
motorcontrolscotland.co.uk



MOTOR CONTROL
SCOTLAND

Safety Information



The product uses a combination of technologies to control and monitor machinery. It is the responsibility of the installer and operator to ensure the system is used as intended. It is essential that you familiarise yourself fully with the equipment, its operation and component parts prior to use. The equipment should only be installed, operated, or serviced by competent personnel who will be solely responsible for the compliance with Health, Safety & Environmental arrangements valid at the place of use. The below safety precautions must be followed.

- This equipment uses dangerous voltages in normal operation - misuse can result in serious injury or death.
- The enclosure door must be closed before and while power is applied.
- An earth connection must be connected to the earth connection of the DrivePanel that meets the local laws and regulations.
- Before working on the motor or the DrivePanel, isolate energy and wait a minimum of 10 minutes before performing work. When powered down the inverter drive retains stored electrical energy. Test all connections with a voltage tester before performing work.
- Read the Manual of the system before any work is carried out.
- The system is a non-field repair system – contact the supplier for support.
- Only suitably qualified and experienced persons shall configure the system for use.
- Wear the appropriate personal protective equipment for the job to be performed.
- Know the Start and Stop functions before operating the equipment.
- Understand the equipment safety labels and heed them.
- Report any damage to the equipment immediately and ensure the system cannot be used until appropriate action is taken.
- Report any problems with the equipment immediately and ensure the system cannot be used until appropriate action is taken.
- Modifications to the system may be dangerous and will void the warranty of the system, as such modifications shall not be performed without consultation with Motor Control Scotland with approval in writing.
- In certain work areas you may experience an extreme development of noise, ensure the installation is risk assessed and suitable protective measure are put in place.
- Before operation, routine checks should be carried out as described within this manual.
- Never work on live electrical systems.
- The system must not be used in an explosive environment.

If in doubt, ASK!



GET IN TOUCH WITH US
+44 752 535 8633

Email:
info@motorcontrolscotland.co.uk

Website:
motorcontrolscotland.co.uk



DrivePanel Technical Information

Part Number	Rating (kW)	Input Voltage Rating (V)	Input Phase	Max Motor Current (A)	Enclosure Size (HxWxD mm)
Core					
MCSDC0037	0.37	380–480V	3	2	600 x 400 x 250
MCSDC0075	0.75	380–480V	3	3.3	600 x 400 x 250
MCSDC0150	1.5	380–480V	3	5.1	600 x 400 x 250
MCSDC0220	2.2	380–480V	3	6.5	600 x 400 x 250
MCSDC0400	4	380–480V	3	10.5	600 x 400 x 250
MCSDC0550	5.5	380–480V	3	15.7	600 x 400 x 250
MCSDC0750	7.5	380–480V	3	20.5	600 x 400 x 250
MCSDC1100	11	380–480V	3	28	500 x 500 x 300
MCSDC1500	15	380–480V	3	36	500 x 500 x 300
MCSDC1850	18.5	380–480V	3	41.5	500 x 500 x 300
MCSDC2200	22	380–480V	3	49	500 x 500 x 300
MCSDC3000	30	380–480V	3	60	760 x 600 x 350
MCSDC3700	37	380–480V	3	73	760 x 600 x 350
MCSDC4500	45	380–480V	3	91	760 x 600 x 350
MCSDC5500	55	380–480V	3	110	760 x 600 x 350
Part Number	Rating (kW)	Input Voltage Rating (V)	Input Phase	Max Motor Current (A)	Enclosure Size (HxWxD mm)
+Safe					
MCSDS0037	0.37	380–480V	3	2	600 x 400 x 250
MCSDS0075	0.75	380–480V	3	3.3	600 x 400 x 250
MCSDS0150	1.5	380–480V	3	5.1	600 x 400 x 250
MCSDS0220	2.2	380–480V	3	6.5	600 x 400 x 250
MCSDS0400	4	380–480V	3	10.5	600 x 400 x 250
MCSDS0550	5.5	380–480V	3	15.7	600 x 400 x 250
MCSDS0750	7.5	380–480V	3	20.5	600 x 400 x 250
MCSDS1100	11	380–480V	3	28	500 x 500 x 300
MCSDS1500	15	380–480V	3	36	500 x 500 x 300
MCSDS1850	18.5	380–480V	3	41.5	500 x 500 x 300
MCSDS2200	22	380–480V	3	49	500 x 500 x 300
MCSDS3000	30	380–480V	3	60	760 x 600 x 350
MCSDS3700	37	380–480V	3	73	760 x 600 x 350
MCSDS4500	45	380–480V	3	91	760 x 600 x 350
MCSDS5500	55	380–480V	3	110	760 x 600 x 350

Delta Electronics Drive MS300 is used for all panels up to 22kW. For 30kw> C2000+ inverter is used.

Specification	Description
Approvals	UKCA
Environment	1000m Altitude IP54 -10...40DegC ≤95%RH, non-conducting
Power Supply	3-phase AC 380–480V (-15 % – +10 %), 50 / 60 Hz
Breaking Capacity of protective devices	10kA



GET IN TOUCH WITH US
+44 752 535 8633

Email:
info@motorcontrolscotland.co.uk

Website:
motorcontrolscotland.co.uk

Pre-Installation Checks

- Check all connections are tight.
- Check that all components are mounted securely.

Installation

- The DrivePanel shall be mounted upright in a position to ensure airflow in and out of the filter cooling.
- The location shall minimise vibration and heat exposure to the DrivePanel.
- Connecting power to the DrivePanel system shall only be performed by a suitably experienced and qualified person.
- Follow motor installation information for motor connections – ensure the correct connection (Star / Delta) for the voltage used.
- Ensure there are no phase to earth, or phase to phase short circuits on the motor or motor cable before turning on power. A short circuit on startup may cause damage to the equipment.
- Connect remote controls as per electrical schematics if used.
- For motor cable lengths greater than 35m contact Motor Control Scotland for protective measures.

Pre-Running Setting

Ensure that the below parameters are set as per the nameplate of the motor and the requirements of the application:

Description	Drive Parameter	End User Notes
Motor Rated Voltage (V)	01-02	
Motor Rated Current (A)	05-01	
Motor Rated Frequency (Hz)	01-00	
Motor Number of Poles	05-04	
Acceleration (Seconds)	01-12	
Deceleration (Seconds)	01-13	

Operation

The DrivePanel system is intended to be as plug and play as possible.

- Green Running LED – motor is powered and running.
- Green Healthy LED – the system is powered and there are no faults present.
- Green Button – Motor Start.
- Red Button – Motor Stop.
- Potentiometer – Motor Speed Control.
- Direction Switch – Motor Clockwise / Anticlockwise.

The DrivePanel +Safe Series has the additional controls:

- Emergency Stop Button.
- Reset Button – used for resetting emergency stop – required at power on.



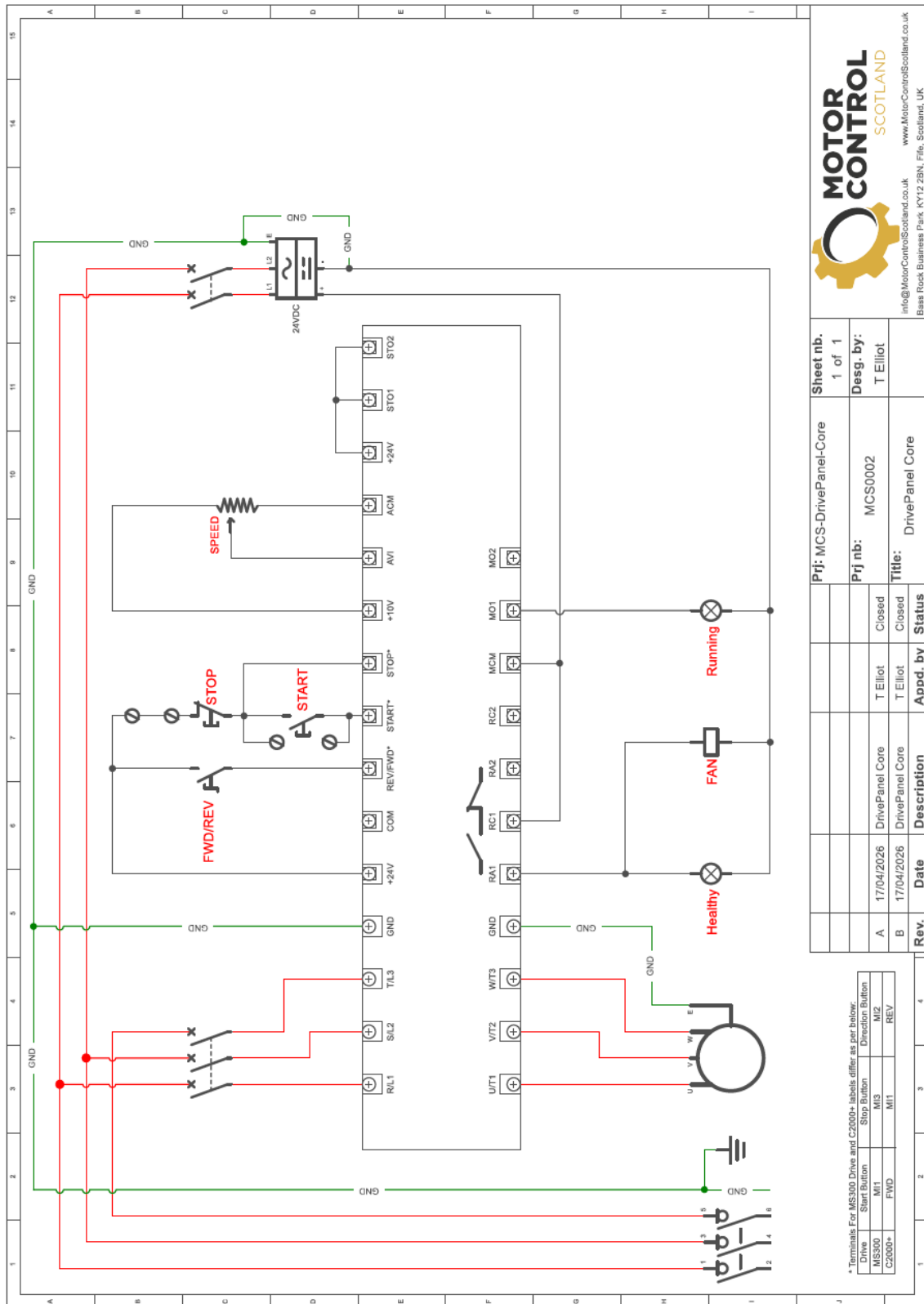
GET IN TOUCH WITH US
+44 752 535 8633

Email:
info@motorcontrolscotland.co.uk

Website:
motorcontrolscotland.co.uk

Electrical Schematics

DrivePanel Core



		Sheet no. 1 of 1
info@MotorControlScotland.co.uk Basas Rock Business Park KY12 2BN, Fife, Scotland, UK		Desg. by: T Elliot
Prj nb: MCS0002	Title: DrivePanel Core	Appd. by Status
Prj: MCS-DrivePanel-Core	Date A 17/04/2026 B 17/04/2026	Description DrivePanel Core

* Terminals For MS300 Drive and C2000+ labels differ as per below:

Drive	Stop Button	Start Button	Direction Button
MS300	M1	M2	M3
C2000+	FWD	M1	REV



GET IN TOUCH WITH US
+44 752 535 8633

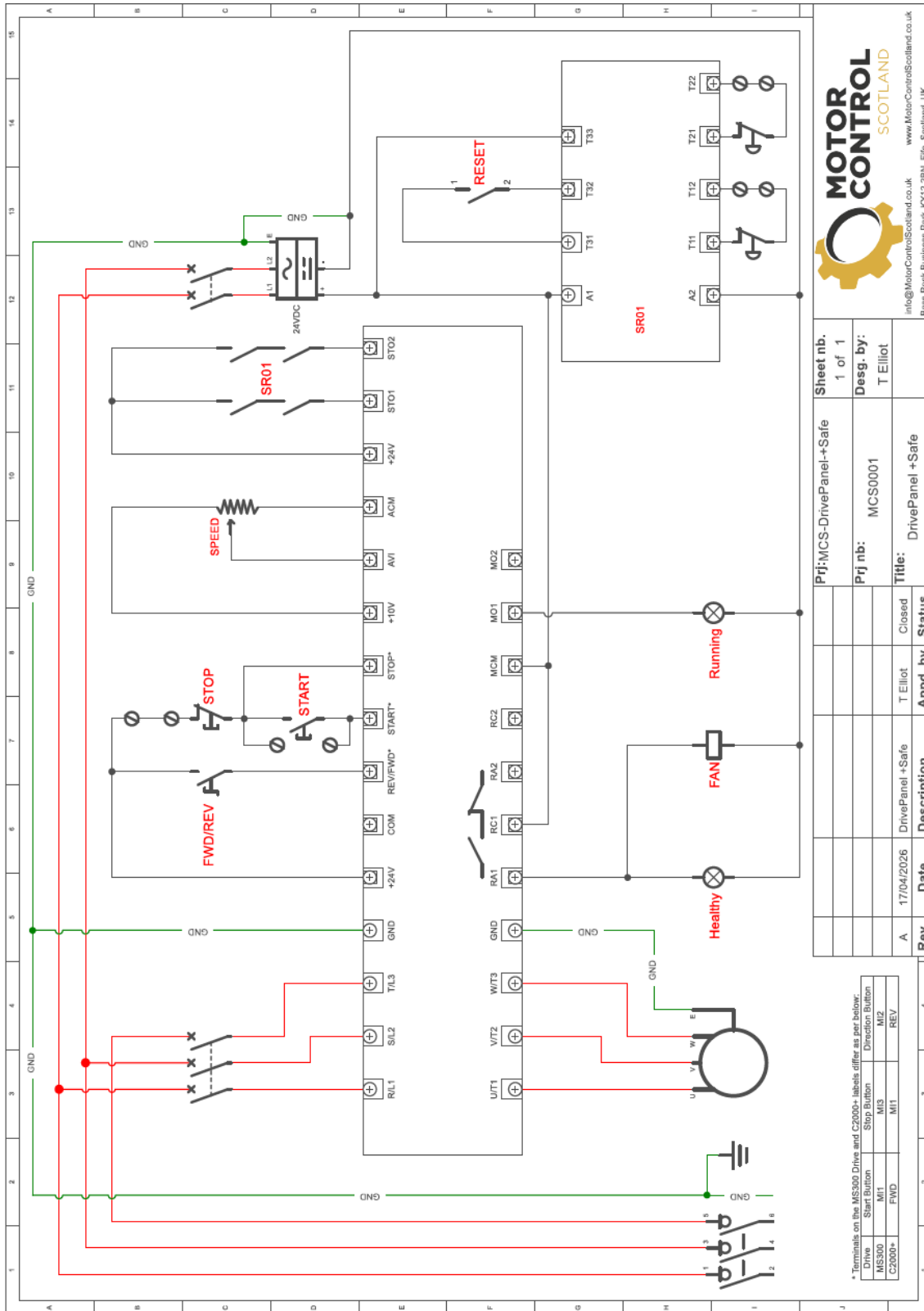
Email:
info@motorcontrolscotland.co.uk

Website:
motorcontrolscotland.co.uk



MOTOR CONTROL
SCOTLAND

DrivePanel +Safe



Prj: MCS-DrivePanel+Safe		Sheet nb. 1 of 1
Prj nb: MCS0001	Desg. by: T Elliot	
Date: 17/04/2026	Description: DrivePanel +Safe	
Rev. A	Appd. by: T Elliot	Status: Closed

*Terminals on the MCS300 Drive and C2000+ labels differ as set below:

Drive	Start Button	Stop Button	Direction Button
MCS300	M1	M2	M3
C2000+	FWD	M1	REV

info@MotorControlScotland.co.uk
www.MotorControlScotland.co.uk
Blair Rock Business Park, KY12 2BN, Fife, Scotland, UK



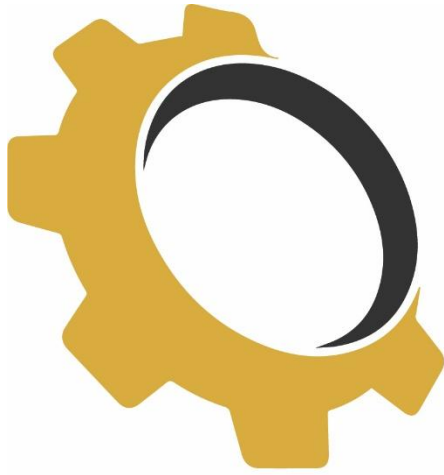
GET IN TOUCH WITH US
+44 752 535 8633

Email:
info@motorcontrolscotland.co.uk

Website:
motorcontrolscotland.co.uk



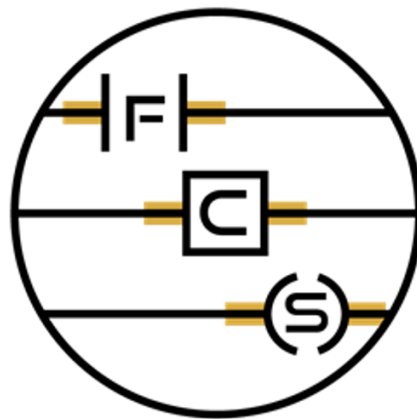
MOTOR CONTROL
SCOTLAND



**MOTOR
CONTROL**
SCOTLAND

DESIGN / BUILD / SUPPLY / SUPPORT

part of



Fife Control Systems



GET IN TOUCH WITH US
+44 752 535 8633

Email:
info@motorcontrolscotland.co.uk

Website:
motorcontrolscotland.co.uk

